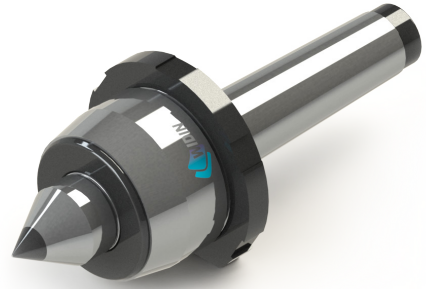
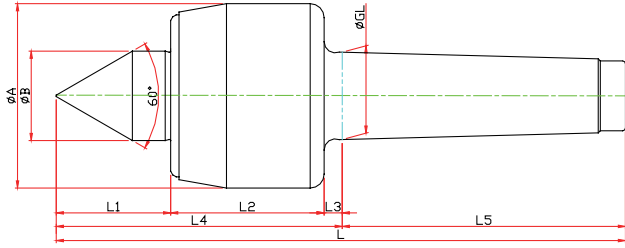


NCCN-TYPE

※ 너트, 초경타입 Nut, Carbide Type Type

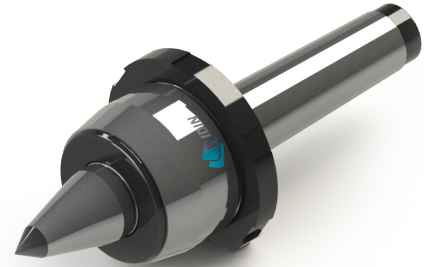
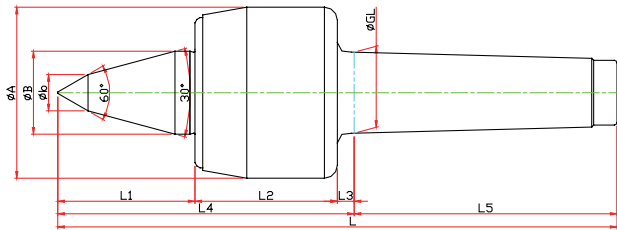


Model	Order Number	Morse Taper	Dimension											Weight MAX.	R.P.M MAX.	Run Out
			GL	A	B	L1	L2	L3	L4	L5	C	N	L			
LC-3NCCN	010113	NO.3	23.825	50	22	27	45	5	77	81	10	70	158	630	4800	0.003
LC-4NCCN	010114	NO.4	31.267	66	32	41	55	6.5	102.5	101.5	14	85	204	1100	3800	0.003
LC-5NCCN	010115	NO.5	44.399	82	40	50	65	6.5	121.5	129.5	18	105	251	1600	3400	0.005
LC-6NCCN	010116	NO.6	63.384	105	45	54	80	8	142	182	25	130	324	2100	3000	0.005

NCBCN-TYPE

※ SHAFT 확장(바이트 간섭 최소화) SHAFT EXTENTION(Minimize the bite-interference)

※ 너트, 초경타입 Nut, Carbide Type Type



Model	Order Number	Morse Taper	Dimension											Weight MAX.	R.P.M MAX.	Run Out
			GL	A	B	L1	L2	L3	L4	L5	C	N	L			
LC-3NCBCN	011113	NO.3	23.825	50	22	47	45	5	97	81	10	70	178	280	4800	0.003
LC-4NCBCN	011114	NO.4	31.267	66	32	53	55	6.5	114.5	101.5	14	85	216	510	3800	0.003
LC-5NCBCN	011115	NO.5	44.399	82	40	65	65	6.5	136.5	129.5	16	105	266	750	3400	0.005
LC-6NCBCN	011116	NO.6	63.384	105	45	78	80	8	166	182	18	130	348	940	3000	0.005

NC-SPECIAL

※ 사용자의 조건에 따라 주문, 제작 Customized-special production for user's condition



NC-TYPE

NCP-TYPE

NK-NKD TYPE

GR-SM TYPE

SMP-TYPE

D50 TYPE

HD-TYPE

PT-TYPE

LM CENTER

LM-H CENTER